

MARKET HARBOROUGH LIBRARY AND HARBOROUGH MUSEUM DEVELOPMENT



by Zara Matthews
(Project Manager Market Harborough Library and Harborough Museum Development)

The Market Harborough Library and Harborough Museum will come together on the first floor of the newly refurbished former corset factory and council offices in Market Harborough, re-opening in Spring, 2014.

This new cultural and community space will be a sustainable and resilient facility, integrating the museum and library with strong links to adult learning. The service will encourage children's reading, provide a sense of place and identity for people living in the area, support well-being for the local community, and inspire, encourage and support learning for everyone of all ages and abilities. The space will also have an important role in attracting tourists to the area.

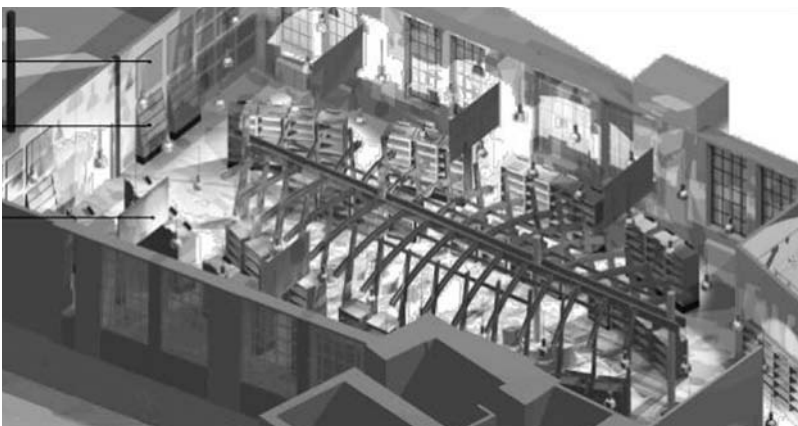
In 2012 Harborough District Council approved plans to refurbish its headquarters building in the centre of Market Harborough. Plans included creating a special cultural and community hub on the first floor to include Market Harborough Library, Harborough Museum and the Leicestershire Adult Learning Service, as well as the Market Harborough Registration Office. Working together Leicestershire County Council and Harborough District Council have developed plans for an exciting and inspiring learning and culture space for the community. The project is funded by Harborough District Council, Leicestershire County Council and the Market Harborough and Bowdens Charity.

Located on the first floor of the district council offices in Market Harborough, the space will integrate the museum and library, seeking opportunities to integrate and share displays for both museum and library collections; the local studies area will fully merge the library and museum local studies resources, and the children's space will house books and museum displays including interactive exhibits.

The internationally significant Hallaton Treasure will return, as will Falkner's boot and shoe making workshop. The museum displays will be updated with new showcases which will allow many more artefacts to be displayed and new stories told. There will be museum displays throughout the whole cultural space. The special temporary exhibition area will allow changing exhibitions and offer the possibility of loans from other museums.



"THIS ROMAN COIN IS ONE OF THE EARLIEST EVER FOUND IN BRITAIN, IT IS A SILVER DENARIUS DATING FROM AROUND 187BC TO 211BC. COPYRIGHT LEICESTERSHIRE COUNTY COUNCIL."



OVERVIEW OF THE ADULT FICTION, ADULT NON-FICTION AND CHILDREN'S AREA

The children's area takes its inspiration from the corsets once made here and the vaulted ceilings of the original building, in so doing will provide an exciting and inspiring place for children to read, to learn and to enjoy their heritage.

Further information is available on the websites:
www.harborough.gov.uk
www.leics.gov.uk/harboroughmuseum
www.leics.gov.uk/marketharboroughlibrary